

PARKER JAMES

ESTATES

Established since 1995



## Park Road

London NW8 7HY

- Available from 9th August
- Superfast broadband
- Building manager
- Concierge
- CCTV
- Pet friendly
- 24 hr emergency hotline
- 5 mins from Regents Park
- Furnished/unfurnished
- Video entry

£1,710 Per Week

# Park Road

London NW8 7HY



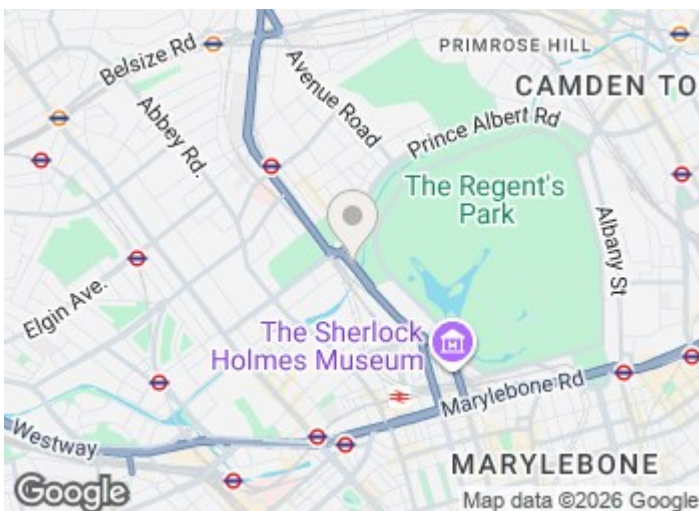
Available furnished or unfurnished from 9th August

A newly refurbished five bedroom apartment located in a prestigious mansion building offering fabulous views over Regents Park.

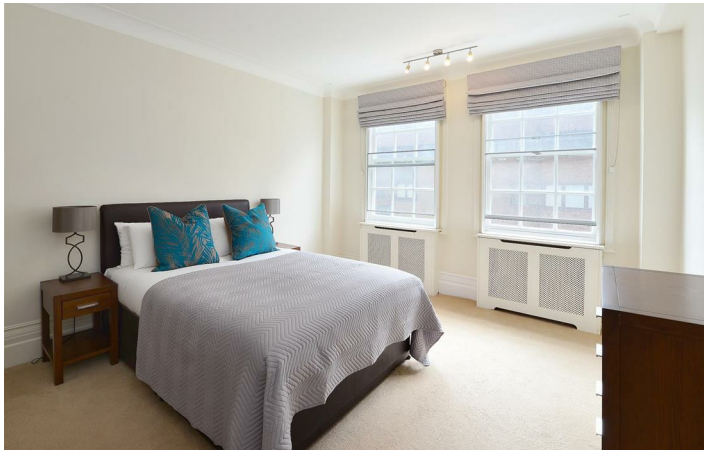
This second floor apartment is set over 1959 sq ft and benefits from ample storage space and comprises a reception room, fitted kitchen, utility room, five bedrooms, two family size bathrooms and a guest cloakroom.

The apartment offers easy access to the famous Lords Cricket Ground, the open spaces of Regent's Park, along with all the local shops, bars, restaurants located on St John's Wood High Street.

- Newly Refurbished
- Porter
- CCTV
- Lift
- 5 min to Regent's Park
- Flexible rental terms



[Directions](#)





# Floor Plan

These particulars, whilst believed to be accurate are set out as a general outline only for guidance and do not constitute any part of an offer or contract. Intending purchasers should not rely on them as statements of representation of fact, but must satisfy themselves by inspection or otherwise as to their accuracy. No person in this firm's employment has the authority to make or give any representation or warranty in respect of the property.



48 Warwick Street Soho, London, W1B 5NL  
Tel: 020 7287 4244 Email: [management@parkerjamesestates.co.uk](mailto:management@parkerjamesestates.co.uk) [parkerjamesestates.co.uk](http://parkerjamesestates.co.uk)

